

LONGAR® TYPE I LED SLIM COMMERCIAL LIGHT

Recessed Commercial LED Light Units



LONGAR® TYPE I LED SLIM LIGHT UNIT FEATURES

- Efficient T5 LED lighting with 2 year warranty.
- Standard sizes ex stock.
- TUV approved lamp with 50,000 working hour's lamp.
- Fully assembled, no dismantling required to install.
- New improved Stainless Self Drilling Torx screws.
- Robust unit conforms to IP65, slim line unit at 45mm thick.
- Compact design, curved safety corners – new improved design.
- CNC machine made for perfection every time, built to last other than routine maintenance.
- Fully assembled, upgraded heat resistant seals.
- UK design and build, 40 years of industry experience driven R&D.
- Templates supplied FOC (on request) to facilitate easy canopy installation.
- Meets DW-172 requirements.
- New easy mount system (optional extra)

APPLICATIONS

- Commercial Kitchens
- Railways
- Industrial Plant
- Hospitals
- Underpasses

LONGAR® TYPE I LED SLIM LIGHT UNIT

To meet the demands of today's modern kitchen, Longar has developed the LONGAR® Type I LED SLIM which has great design aspects, easy to maintain, water tightness meeting IP65, and an optimal light unit for a better work environment. The LONGAR® Type I LED SLIM offers superior aesthetics with slim line design, radiused corners and a wealth of design features.

CONSTRUCTION / MATERIAL SPECIFICATION

The LONGAR® Type I LED SLIM is fabricated from Stainless Steel. The light unit lid is joint less, manufactured from 1.2mm Stainless Steel (430 grade, 240 grit) and sealed to the housing.

Satin glass is 4mm toughened, heat and impact resistant and polished on the underside for ease of cleaning. The glass is sealed to the lid frame by a gasket and metal support.

PACKAGING

All units are suspended in double wall boxes with double wall cardboard end supports with air cushions for protection. We then glue both ends closed in order to prevent any contamination whilst in transit.

HANDLING

- Handle with care when unpacking.
- Remove double wall cardboard end caps with care.
- Store in dry and frost protected place.

SAFETY INFORMATION

All electrical work must be undertaken by a qualified contractor to ensure compliance to the latest edition BS7671 and IEE/IET wiring regulations.

Before installing a LED Tube or performing any maintenance, ensure power supply is turned off at the circuit breaker or fuse box.

This product is designed for permanent connection to fixed wiring; the circuit should be protected with the appropriate MCB or fuse.

ENVIRONMENT

Please DO NOT dispose of electrical items or packaging as unsorted waste, use the recycling facilities provided by your local authorities.

INSTALLATION WITHOUT MOUNTING BRACKET

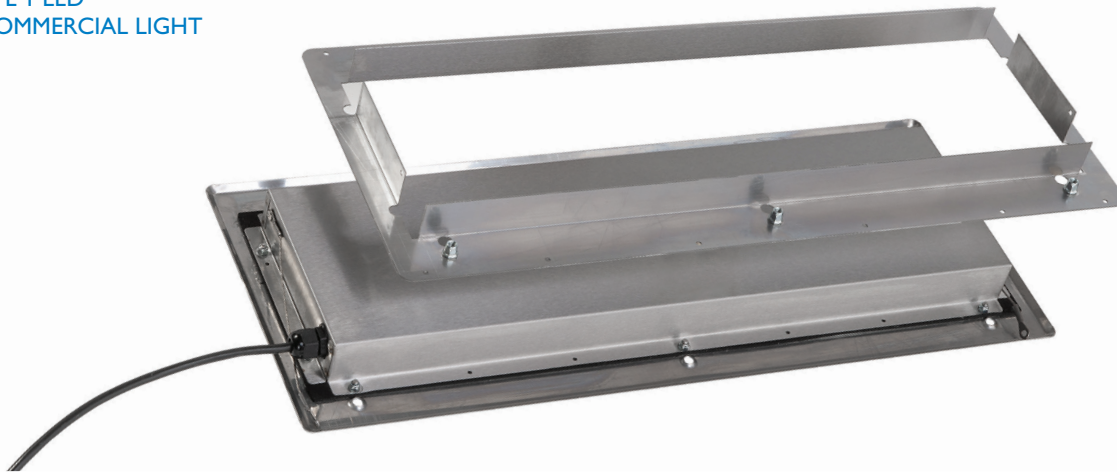
REMOVAL OF THE LID IS NOT REQUIRE TO FIT LUMINAIRE

Before installing the LONGAR™ TYPE I LED SLIM V2 COMMERCIAL LIGHT ensure power supply is turned off at the circuit breaker or isolated. A cut out is required as per diagram 1.3 with pilot holes (4.2 to 4.26mm) for the fixing screws. We provide Stainless Steel Tapping Countersunk screws to mount the luminaire housing to the pilot holes. Prior to fixing in situ please affix (Rivet preferred) the safety lanyards from the luminaire to the canopy. Use the IM power lead and connect to a protected power supply using supplied connector and earth to current legislation requirements. All connections and canopy must be earthed. We also can provide at additional cost a mounting bracket as shown in the images on page two.

LONGAR® TYPE I LED SLIM COMMERCIAL LIGHT

Recessed Commercial LED Light Units

2FT TYPE I LED SLIM COMMERCIAL LIGHT



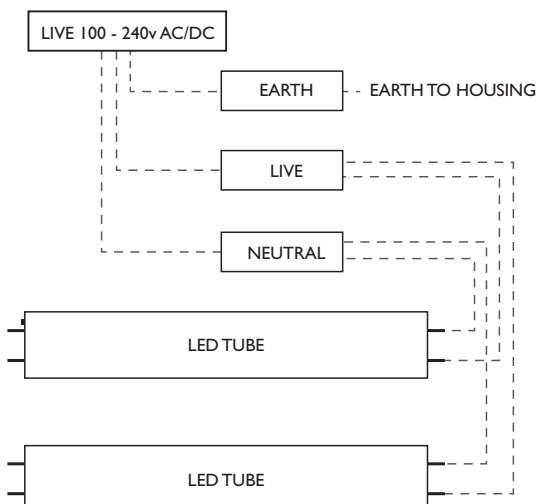
INSTALLATION WITH OPTIONAL LONGAR MOUNTING BRACKET

REMOVAL OF THE LID IS NOT REQUIRE TO FIT LUMINAIRE
Before installing the LONGAR™ TYPE I LED SLIMV2 COMMERCIAL LIGHT ensure power supply is turned off at the circuit breaker or isolated. Cut a rectangular hole in the location where the light is to be mounted as per the following 2FT(620x230mm)/3FT(920x230mm)/4FT(1220x230mm).The mounting bracket has 4.0mm holes for rivets to mount the bracket into position, punch/drill a hole 4.0mm into the mounting position then fix with a rivet. Once the bracket is mounted then you will need to rivet/bolt(4.0mm) the lanyard from the light unit to the mounting bracket lanyard hole. Use the IM power lead and connect to a protected power supply using supplied connector and earth to current legislation requirements.All connections and canopy must be earthed. Once connected mount the luminaire to the bracket and screw into position with provided screws.

WIRING INFORMATION

1 Meter of 3 Core Power cord is supplied with the unit which is earth tested and then power tested with the lamps in the circuit before the units are packaged.A fully qualified electrician must then make the connection in accordance to current legislation.

SUPPLY/EARTH CLASS II
100 – 240V AC 50/60Hz



For technical specifications, part numbers and ordering information, please see overleaf.

MAINTENANCE

The rugged design and construction of LONGAR® Type I LED SLIM means very little maintenance is required through the life of the fitting, other than the changing of the fluorescent lamps themselves. However, as the fitting is designed for many applications, the following actions may be beneficial:

CAUTION: ISOLATE LUMINAIRES FROM ELECTRICITY SUPPLY BEFORE COMMENCEMENT OF ANY WORK.

Diffuser cover screws and gasket seal should be checked for tightness and seal integrity following installation and after every tube change.

On any occasion when access to the luminaire is carried out, inspect for signs of overheating or water ingress from plant as this can cause damage.

REPLACEMENT OF LAMPS

LED Lamps are rated at 50,000 hours + should one fail, we recommend changing as follows:

Isolate the power supply and disconnect connection then remove Light unit from situ. Turn face down on a soft surface and remove nuts holding the base to the lid, then remove the base from the lid.

To remove the LED lamps from the base twist 90 Deg and remove. Install new lamps in the reverse procedure as removal.

IF REMOVAL OF THE LED TUBES ARE REMOVED THEY MUST BE REPLACED WITH THE AC INPUT END(LABELLED) FITTED TO THE SUPPLY/EARTH END, THIS IS CLEARLY MARKED INSIDE THE BOX ON THE METAL LAMPHOLDER BRACKET. CLOSE LID AND TIGHTEN SEAL.

CLEANING OF LUMINAIRES

LONGAR® Type I LED SLIM glass and fascia should be cleaned at regular intervals to keep optimum light output.

Remove stubborn marks with a swab and alcohol sparingly. Never use methylated spirits or other solvents, always read the label of cleaning agents to ensure no harmful solvents are present.

The LED tubes have a 2 year warranty.

3FT TYPE I LED
SLIM COMMERCIAL LIGHT



TECHNICAL SPECIFICATIONS

HOUSING AND LID MATERIAL:	STAINLESS STEEL 430 (240 GRIT FINISH)
LID DIFFUSER:	Satin Toughened Glass 4mm thickness
DEPTH:	45mm
DIMENSIONS - 2FT:	655(L) x 272(W) x 45(D) mm (Back Box 595(L) x 175(W))
DIMENSIONS - 3FT:	955(L) x 272(W) x 45(D) mm (Back Box 895(L) x 175(W))
DIMENSIONS - 4FT:	1255(L) x 272(W) x 45(D) mm (Back Box 1193(L) x 175(W))
CUT OUT DIMENSIONS - 2FT:	615(L) x 202(W) mm
CUT OUT DIMENSIONS - 3FT:	915(L) x 202(W) mm
CUT OUT DIMENSIONS - 4FT:	1215(L) x 202(W) mm
LONGAR MOUNTING BRACKET - 2FT:	620(L) x 230(W) mm
LONGAR MOUNTING BRACKET - 3FT:	920(L) x 230(W) mm
LONGAR MOUNTING BRACKET - 4FT:	1220(L) x 230(W) mm
LAMP POWER - 2FT:	10W x 3 (Total unit consumption 30W)
LAMP POWER - 3FT:	12W x 3 (Total unit consumption 36W)
LAMP POWER - 4FT:	15W x 3 (Total unit consumption 45W)
LIGHT OUTPUT - 2FT:	625 LUX (MEASURED AT 1.2M)
LIGHT OUTPUT - 3FT:	725 LUX (MEASURED AT 1.2M)
LIGHT OUTPUT - 4FT:	941 LUX (MEASURED AT 1.2M)

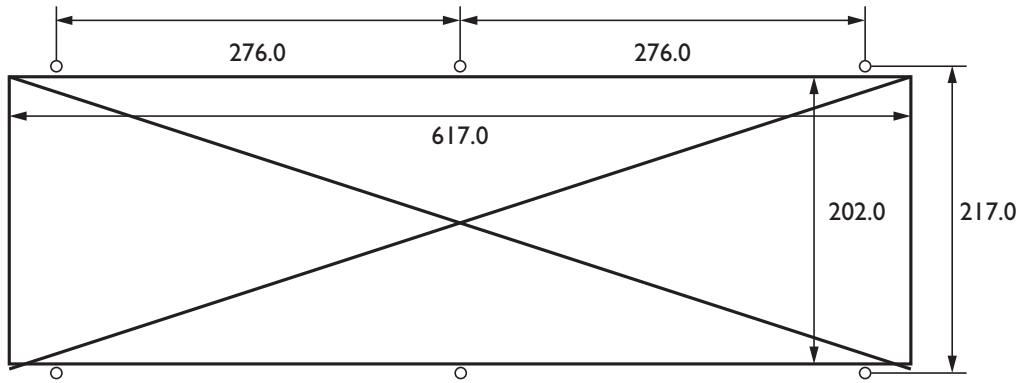
COLOUR TEMPERATURE:	5500K
CE MARKED:	EU Directive 93/68/EEC
IP RATING:	IP64
INPUT VOLTAGE:	100-240Volts
CURRENT:	AC 50/60Hz
POWER FACTOR:	>0.95
LED DRIVER OUTPUT VOLTAGE DC:	36-42
LED ELECTRICAL CLASS:	2
LED LAMP VIEWING ANGLE:	120° DEG
LED DIMMABLE:	NO
LED LIFESPAN:	50,000 HOURS
LED FIRE RATING:	V-O
LED DIFFUSER MATERIAL:	POLYCARBONATE
LED TUBE HOUSING:	ALUMINIUM

LONGAR® TYPE I LED SLIM COMMERCIAL LIGHT

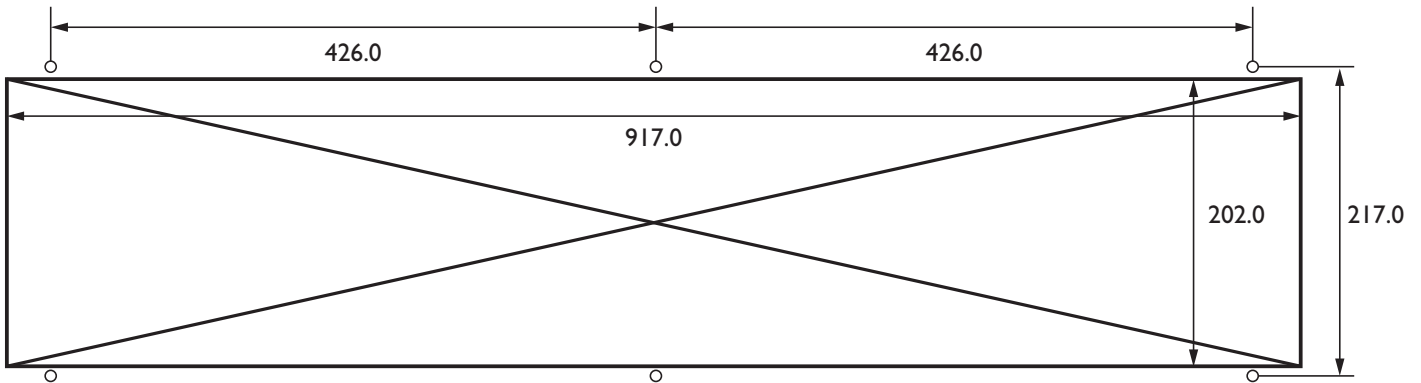
Recessed Commercial LED Light Units

CUT OUT DIMENSIONING DRAWINGS - DIAGRAM I.3

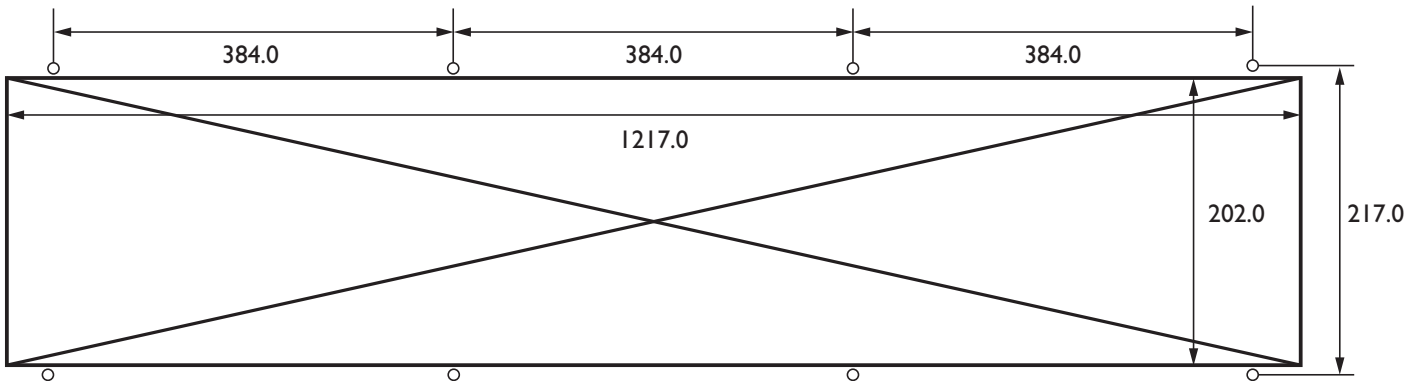
LONGAR® TYPE I LED 2FT CUT OUT AND HOLE (6MM) MOUNTING LOCATION



LONGAR® TYPE I LED 3FT CUT OUT AND HOLE (6MM) MOUNTING LOCATION



LONGAR® TYPE I LED 4FT CUT OUT AND HOLE (6MM) MOUNTING LOCATION



LONGAR INDUSTRIES

FILTER AND FABRICATIONS FOR A CLEANER ENVIRONMENT

Longar Industries Limited, Unit 25, Glenmore Business Park, Colebrook Way Weyhill Road, Andover, Hampshire SP10 3GZ United Kingdom

T +44 (0)1264 332 993 F +44 (0)1264 332 994 E info@longarind.com W www.longarind.com

As part of our program for continuous improvement, Longar Ltd reserves the right to change specifications without notice. 25-04-2018.